

# ReplixFax<sup>®</sup> for Exchange



## Enterprise Fax Solution for Microsoft Outlook and Exchange Users for Windows Environment

### Send and Receive Faxes as Easily as E-mail or Print

ReplixFax for Exchange allows Microsoft Outlook users to send a fax just as easily as sending an e-mail or printing a file. From within the Outlook e-mail client, ReplixFax for Exchange users simply compose an *e-mail to fax* message with native file attachment(s) and click to send a fax to selected recipients. The ReplixFax Print2Fax driver allows users to send a fax simply by printing a file from within any desktop application. Once the fax transmission is complete, the user will receive a delivery status notification via e-mail. Incoming faxes are delivered directly into the user's e-mail inbox in either TIF or PDF format as an e-mail attachment along with fax information details.

### Enable Any Business Application with Automated Faxing

ReplixFax for Exchange offers comprehensive fax automation toolkits to fax-enable any business application whether it is a Web, Windows, Java or legacy host-based application by using:

- Web Services Fax API
- Windows Fax API
- Java Fax API

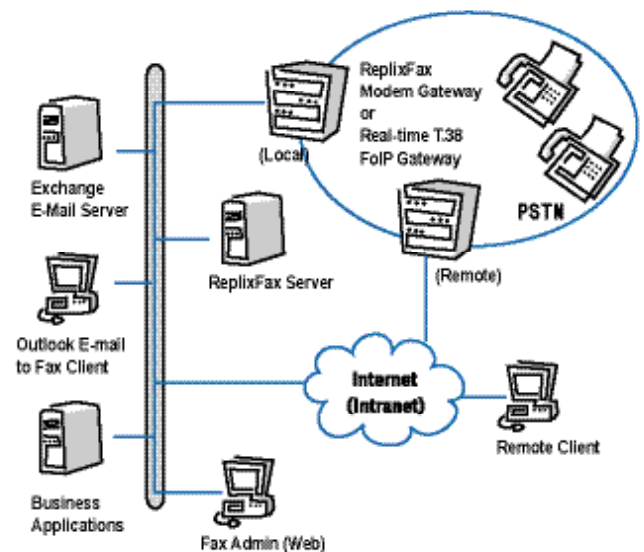
to develop a custom fax client or to fax-enable any existing business application regardless of whether it is Web, Windows, Java or legacy host-based. ReplixFax also supports Pre- and Post-filter, an external program or custom script, that can be conveniently plugged in and automatically invoked upon fax events for ad-hoc fax workflow processing to streamline your document processes.

### Centralized Administration via Web

ReplixFax for Exchange server provides centralized administration that allows fax system administrators to monitor, configure and manage all ReplixFax users, multiple fax servers and Intelligent Modem Gateways (IMGs) from a single, remote location with full control and access security. Server logs can be viewed and managed through a web administration interface and can be used for remote diagnostics and troubleshooting.

### Features and Capabilities

- Fax address lookup from Microsoft Exchange Directory or local contact list
- ReplixFax Outlook Add-in for native Outlook e-mail to fax user experience
- SMTP mail-to-fax fax addressing support to send faxes from standard Outlook client
- Delivery options include delayed sending, priority, multiple retry attempts, fax page orien-



- Fax status notifications via e-mail
- Server-based native file rasterization
- Fax data managed in a relational database
- Print-to-fax support for fax file conversion from any Windows application and auto-launch of the fax client
- Fax status monitoring in real-time via web
- Least Cost Routing (LCR) over any IP network
- Real-time T.38 Fax over IP (FoIP) support
- Inbound routing support via DID, DTMF, DNIS, CSID, ANI, Fax Port, Network Printer or Manual Routing
- Global-phone number dialing rule support
- Retransmission of failed fax pages
- Accounting and charge-back billing support
- Detailed logging and multi-server billing support via detailed Call Data Record (CDR)
- Full support of global PSTN connectivity including analog, digital T1/E1 and ISDN



Partnered with:  
Tactical Digital Corp.  
www.tacdig.com  
7880 Rolling Woods Ct.  
Unit #101  
Springfield, VA 22152  
Phone: 1-888-821-0845  
Fax: 1-703-924-6109

## Fax Archiving for Compliance

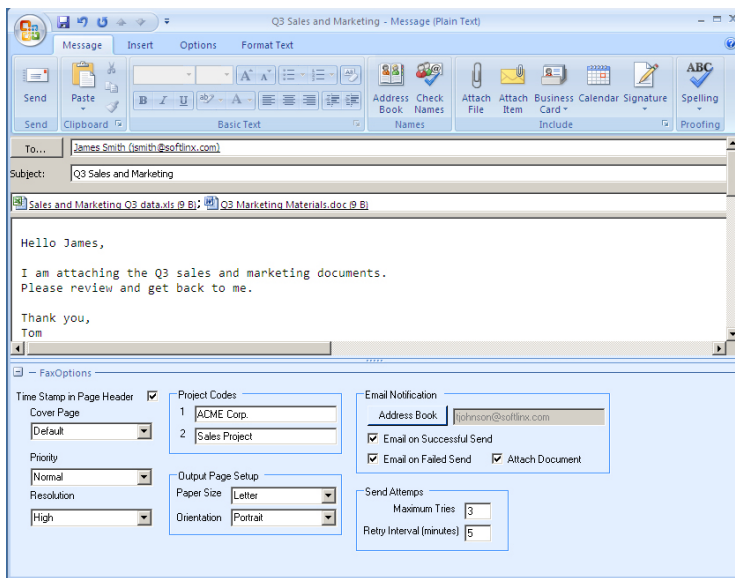
ReplixFax for Exchange is integrated with commercial document management systems that provide automated capture, indexing and archiving of inbound/outbound fax documents into the document management system. The archived fax documents can be later searched, retrieved and used to meet any regulatory compliance requirements.

## Fax Server Clustering and Virtualization

The ReplixFax system supports high availability through out-of-the-box Fax Server Clustering and Virtual Fax Server through server virtualization. Fax server clustering offers scalability, reliability and performance to serve most demanding business fax communication requirements. Furthermore server virtualization provides efficient server utilization and cost savings.

## ReplixFax for Exchange technical specifications

● Microsoft Exchange Servers	Microsoft Exchange 2007, 2010, 2013
● Microsoft Outlook Clients	Microsoft Outlook 2007, 2010, 2013
● Other Clients	Any SMTP e-mail client
● Fax Server Platform	Microsoft Windows 2008, 2012 (64 bit)
● Intelligent Modem Gateway (IMG) Platform	Microsoft Windows 2008, 2012 (64 bit)
● Fax Boards and FoIP Software	Dialogic® Brooktrout® Analog and Digital T1, E1 and ISDN fax cards, SR140 FoIP software
● Telephone Network	Analog, Digital T1, E1, ISDN
● IP Fax Support	Real-time T.38 Fax over IP, Store-and-forward T.37 Email to Fax, IP Least Cost Routing
● Inbound routing	DID, DTMF, DNIS, CSID, ANI, Fax Port, Network Printer or Manual Routing
● Server-based rasterization for native file attachments	Microsoft Office, Lotus SmartSuite, ASCII text, TIF, PDF, BMP, GIF, JPG, Postscript, HTML



## The Softlinx Solution

Softlinx ReplixFax is an ideal enterprise fax solution to consolidate all of your fax communication needs across multiple office locations, or replace multiple legacy fax servers into a single, centralized Fax over IP (FoIP) system. Softlinx helped many leading organizations worldwide successfully automate their business fax communications and save costs. Softlinx is a leading vendor for mission critical business fax messaging solutions you can depend on.

For more information on ReplixFax for Exchange, visit our website at <http://www.softlinx.com>.



Partnered with:  
Tactical Digital Corp.  
[www.tacdig.com](http://www.tacdig.com)  
7880 Rolling Woods Ct.  
Unit #101  
Springfield, VA 22152  
Phone: 1-888-821-0845  
Fax: 1-703-924-6109

## Fax over IP (FoIP) Support

Certified by Dialogic for compatibility with most leading VoIP vendors, the ReplixFax for Exchange fax server works with your Voice over IP network to leverage your VoIP deployment. FoIP can help you save on long distance and international toll charges, and reduce network complexity.

